

Enhancing Landscape Convention for Climate Resilience with New European Bauhaus Values and Principles

Sladana Lazarević

Norwegian University of Science and Technology, Norway

sladjana.lazarevic@ntnu.no

Deborah Navarra

Norwegian University of Science and Technology, Norway

Annemie Bertha Marcella Wyckmans

Norwegian University of Science and Technology, Norway

Iva Bedenko

City of Zagreb, Croatia

Branka Mrakužić

City of Zagreb, Croatia

Abstract

The European Landscape Convention (ELC), adopted 25 years ago, has significantly influenced landscapes and everyday life across Europe by promoting the protection, management, and planning of landscapes in urban, rural, and peri-urban areas. The ELC emphasises that landscapes are integral to cultural heritage, ecological balance, and individual well-being. It applies to all types of landscapes, whether outstanding or ordinary, and encourages public participation in their management. Nevertheless, urban regeneration and transformation practices often lack a holistic understanding of climate-responsive perspectives and an appreciation for the societal need for a more valuable and healthier urban environment, one that is co-created with and for communities. This paper discusses how these approaches applied in the project could influence *landscape preferences* and *perceived restrictiveness*. It draws on the Bauhaus Bites

(BB) project, exploring how New European Bauhaus (NEB) values and principles can be integrated into the ELC. This integration complements the protection and planning of urban landscapes and enhances societal readiness for urban regeneration by bringing a cultural, aesthetic, and inclusive dimension. Using a case-study methodology focused on Zagreb, Croatia, it examines how therapeutic and community gardens embed NEB values in neighbourhood-level transformation. These gardens align with green infrastructure strategies, thereby supporting the transformation of urban food systems fortified with nature-based solutions (NbS) and NEB values and principles.

Keywords: Heritage, landscape policy, spatial planning, urban regeneration, climate adaptation, food system transformation, urban gardens, landscape-area-based approach, people-centred approach, nature-based solutions, New European Bauhaus

1. Introduction to the European Landscape Convention (ELC) and New European Bauhäus (NEB)

The European Landscape Convention (ELC), adopted in Florence in 2000, is the first international treaty dedicated to protecting, managing, and planning landscapes (Council of Europe, 2000). A core innovation of the ELC emphasises that all landscapes are integral to cultural heritage, ecological balance, and individual well-being (Council of Europe, 2021). The Convention mandates the recognition of landscape in law as an essential component of human surroundings and identity (Article 5a), the establishment of public participation in decision-making (Article 5c), and the integration of landscape into multiple policy sectors, including the environment, agriculture, cultural heritage, and planning (Article 6a-c). Since its adoption, the ELC has influenced a wide range of legal and institutional reforms across member states, catalysing interdisciplinary and transdisciplinary approaches to landscape governance (Pătru-Stupariu and Niță 2022; Civitarese Matteucci 2022) and prompting debates on governance and participation in diverse European contexts (Gonçalves 2024). Furthermore, although the ELC addresses sustainability and integration, it was formulated before the concept of “climate resilience” became central to urban discourse. However, today, cities are at the forefront of climate change. The UN-Habitat reports

indicate that metropolitan areas account for 70% of greenhouse gases and face escalating heatwaves, floods, and sea-level rise (UN-Habitat, 2024; IPCC, 2023). Recognising this, scholars and planners have called for the integration of climate adaptation into urban landscape policy. UNESCO's 2011 Historic Urban Landscape recommendation and its 2023 review of "Urban Heritage for Resilience," similarly urge holistic, landscape-based approaches that combine cultural heritage with green infrastructure (UNESCO, 2011, 2023). The ELC's broad remit already encourages this by treating everyday landscapes as heritage worthy of care and by promoting Nature-based Solutions (NbS). However, implementation has often focused on technical or ecological aspects, with less attention to design quality or community-driven aesthetics.

Launched by the European Commission in 2020, the **New European Bauhaus (NEB)** (European Union, 2025) seeks to bridge environmental imperatives with cultural and aesthetic dimensions of transformation. Framed around the values of beautiful, sustainable, together (European Commission 2022), the NEB seeks to embed design, aesthetics, and inclusivity into the green transition. It brings architecture, design, science, and community engagement into the climate agenda.

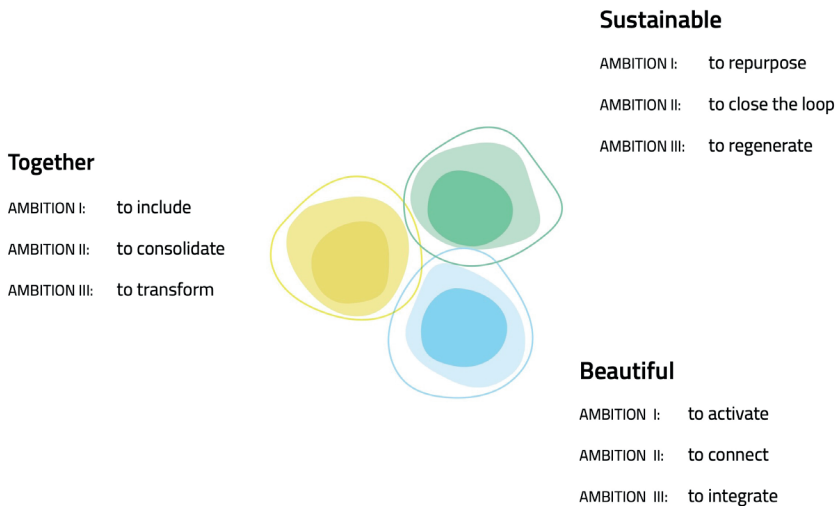


Figure 1. NEB values and ambition levels source NEB Compass (European Commission Joint Research Centre 2024)

It calls for participatory, transdisciplinary, and multi-level engagement to address societal challenges through design-led innovation and cultural co-creation. The NEB framework encourages public institutions and civil society to reimagine and reshape public spaces not only as functional infrastructures but as lived and meaningful environments. Tools such as the NEB Compass (European Commission, 2023) and NEB Self-Assessment Method (European Commission Joint Research Centre, 2024) provide emerging pathways for operationalising these values.

While both frameworks have received scholarly attention, their convergence remains underexplored in the academic literature. There is a limited analysis of how NEB values and assessment tools can be utilised to enrich and advance ELC-driven landscape policy and planning, particularly in urban and peri-urban settings. This paper contributes to this gap by reviewing the European Landscape Convention's published corpus through a climate resilience and NEB-informed lens. It also proposes a conceptual and analytical framework based on the NEB values and the 3Ps (People, Places, and Policies) strategy (Lazarević and Navarra 2025). It tests its applicability through a case study of urban food system transformation and co-designed gardens in Zagreb, one of the Trailblazer cities in the Horizon Europe project *Bauhaus Bites: Positive Food Environments Fortified with Nature-Based Solutions and New European Bauhaus* (European Union 2024).

Thus, this paper aims to explore how New European Bauhaus values and principles can support the reinterpretation and implementation of the European Landscape Convention in urban contexts, focusing on climate-resilient, inclusive, and health-promoting food landscapes in urban regeneration realities.

2. Literature review

The European Landscape Convention (ELC) promotes a comprehensive and participatory approach to landscape governance (Council of Europe, 2008 with emphasis on public awareness, cross-sectoral integration, and landscape quality objectives tailored to local character and aspiration (Council of Europe, 2000).

Despite these advances, critical scholarship has highlighted significant limitations in the ELC's implementation, particularly in urban and peri-urban contexts. Several authors point to a lack of operational tools for translating landscape quality objectives into actionable plans within fast-changing urban environments (Olwig, 2007; Jones & Stenseke, 2011). There is limited

academic work analysing how the ELC's core instruments are being adapted to respond to accelerating climate pressures, rapid urbanisation, and shifting food systems (Potschin et al., 2018; Selman, 2012). State-of-the-art reviews on blue-green infrastructure consolidate evidence on flood mitigation, heat reduction, and co-benefits crucial to climate-resilient urban regeneration, offering a technical complement to ELC's quality and management objectives (Przestrzelska et al. 2024). Although the ELC formally mandates public participation, the extent and quality of this participation vary widely across member states (Roe & Mell, 2013), often falling short of the Convention's transformative ambition.

There is limited academic work analysing how the ELC's core instruments (e.g. landscape quality objectives, participatory procedures) are being adapted for urban resilience, food systems transformation, or the use of landscape in emerging climate governance frameworks.

However, in recent years, landscape has re-emerged as a strategic concept within climate resilience discourse, as cities confront rising temperatures, biodiversity loss, and food insecurity (UN-Habitat, 2024; IPCC, 2023). Landscape-based approaches, including nature-based solutions (NbS), offer pathways for multifunctional space design that can integrate ecological performance with cultural meaning and community participation (Benedict & McMahon, 2006; Kabisch et al., 2017). Recent sector literature and journal venues continue to publish integrated frameworks around European landscapes, indicating an active research pipeline where ELC-related governance and planning questions are scrutinised (Giudice 2024). However, literature suggests that these approaches are often disconnected from formal landscape policy frameworks such as the ELC. Instead, they are frequently driven by green infrastructure agendas or urban regeneration schemes, which do not necessarily ensure inclusive governance or cultural recognition (Anguelovski et al., 2019).

Participatory landscape governance is increasingly recognised as vital to achieving just climate transitions (Schlosberg et al., 2017; Buizer et al., 2015), but it remains unevenly institutionalised. Although the ELC provides a procedural mandate for public involvement, there is a dearth of evaluative research on how these participatory mechanisms have translated into sustained governance structures at the municipal level. While explicit references to "climate change impacts on cities" are rare in Council of Europe publication titles, the intersection of sustainable development, disaster risk reduction, and participatory planning in urban contexts forms a robust implicit framework for climate resilience. Future publications could enhance

their impact by explicitly linking landscape management to climate adaptation metrics, ensuring cities remain at the forefront of Europe's resilience agenda.

Analysis of ELC Literature in Relation to NEB Values and Principles

The integration of participatory, climate-oriented, and culturally grounded landscape planning, especially in relation to the ELC, remains under-researched (Giudice, 2024; Przestrzelska et al., 2024). The ELC scholarship has primarily focused on policy integration, stakeholder involvement, and the participatory dimensions of planning, reflecting its emphasis on the cultural, ecological, and social values of everyday landscapes (Pătru-Stupariu and Niță 2022). At the same time, critics argue that implementation has remained uneven and constrained by institutional path dependencies (Civitarese Matteucci 2022), suggesting the need for new conceptual and methodological approaches. A legal analysis shows that the ELC's implementation hinges on introducing concrete planning instruments, such as dedicated landscape plans or the systematic inclusion of landscape in ordinary planning, underscoring pathways cities can use to embed landscape in regeneration (Civitarese Matteucci and Cartei 2022).

Although the New European Bauhaus (NEB) is a relatively recent initiative launched in 2020, it has rapidly gained traction across design and policy domains. These values have sparked new interest in design-led innovation, spatial justice, and collective imagination in urban development (Lähdesmäki et al., 2023). Critics suggest that NEB's long-term impact depends on its integration beyond flagship projects. Urban design literature on placemaking and creative climate governance aligns with NEB principles, particularly in studies of urban gardens that emphasise the benefits for community well-being and food justice (Tomatis et al., 2023).

Although still emerging in academic literature, several scholars argue that NEB provides a much-needed cultural and civic framework for interpreting green transitions not merely in technical or economic terms, but through public meaning and spatial equity (Cugurullo, 2021; Almeida et al., 2024; Lazarević and Temeljotov Salaj, 2025).

The literature review revealed a convergence of normative goals between the European Landscape Convention (ELC) and the New European Bauhaus (NEB), yet empirical work remains thin. These two frameworks have evolved separately: the ELC remains anchored in legal and territorial planning discourse, while the NEB has emerged through cultural and innovation-oriented initiatives linked to the European Green Deal.

Table 1. Key Concepts Linking ELC, NEB, and Bauhaus Bites for Landscape-Based Urban Transformation. Authors’ elaboration based on policy frameworks and the BB Vision (2024)

Concept	Definition / Role	Anchored In	in Bauhaus Bites
Landscape Preferences	How people perceive, value, and emotionally relate to specific environments.	ELC (Art. 1a); NEB (beauty, together)	Guides co-design of spaces to reflect community desires and place identity.
Perceived Restrictiveness	Barriers (physical, symbolic, institutional) that inhibit access or participation in landscape use.	ELC (Art. 5c); NEB (inclusion)	Identifies inequities in access to food and green space; informs inclusive design.
Climate Resilience	The capacity of urban systems to adapt, recover, and thrive under climate stressors.	ELC (Art. 6b); NEB (sustainability)	Framed through NBS and urban food production for adaptive urban landscapes.
Co-creation	Collaborative processes that engage citizens in shaping their environments.	ELC (participation); NEB (process)	Core method for developing BB Food Environments; ensures ownership and relevance.
Food Environment	The physical, social, and cultural surroundings that influence food access, choices, and identity.	ELC (integration); NEB (experiential)	Operational interface for landscape, diet, and culture transformation.
European Landscape Convention (ELC)	Legal framework recognizing landscape as essential to quality of life and public participation.	ELC	Provides normative grounding for landscape rights, responsibilities, and quality.
New European Bauhaus (NEB)	Design-led initiative promoting beautiful, sustainable, and inclusive spaces.	NEB	Injects cultural, affective, and participatory dimensions into transformation.
Urban Food System Transformation	Transition toward local, equitable, circular, and healthy food systems.	BB rationale; EAT-Lancet; WWF	Thematic driver of BB interventions, linking spatial change with ecological and health goals.

When analysed against the values and principles of the New European Bauhaus (NEB), this literature reveals a mixed picture. Two of the NEB’s three values, *sustainability* and *togetherness*, are well-embedded in ELC discourse. At the same time, beauty remains underexplored (Lazarević and Navarra, 2025), and aesthetic quality and emotional engagement are

less systematically addressed in ELC-aligned research and policy (Council of Europe, 2021; European Commission, 2024). Similarly, participatory approaches reported in ELC scholarship demonstrate affinities with NEB's together ethos, reinforcing the Convention's democratic and community-driven orientation (Gonçalves 2024).

Outline of Identified Research Gaps

The overview (Table 1) highlights several converging themes. Although the ELC provides a comprehensive framework for landscape governance, its operational uptake in climate-resilient and food-secure urban environments is uneven. The NEB offers design principles and participatory tools. Yet, few studies demonstrate how these principles can be systematically applied to operationalise the ELC.

The identified key gap is the absence of an analytical framework that explicitly connects NEB principles to ELC implementation in urban and peri-urban contexts.

The *landscape-area-based* and *people-centred approaches* place public perception and participation at the heart of landscape **policy**. They move beyond expert-driven frameworks to include the aspirations and values of local communities (Council of Europe, 2008) and **places**, potentially affecting *landscape preferences* and *perceived restrictiveness*. Urban and peri-urban food landscapes, such as agricultural parks, community gardens, and therapeutic green spaces, have become key arenas for testing integrated approaches to sustainability, health, and social inclusion (Viljoen & Wiskerke, 2012; Lohrberg et al., 2016). Still, there is little direct engagement between ELC and research on multifunctional landscapes, such as agricultural parks. Agricultural parks combine productive functions with educational, recreational, and ecological roles, offering a landscape-based model of multi-benefit urban space (Donadieu, 1998; Bell & Cerulli, 2012). Scholars have also pointed to their potential to address spatial justice and territorial cohesion by reconnecting urban populations with food systems and cultural identity (Tornaghi, 2014; Opitz et al., 2016). These multifunctional landscapes align with both ELC principles (e.g. landscape quality objectives, democratic access to landscape) and NEB values (co-creation, aesthetics, sustainability). However, the convergence of these two policy frameworks in practice has not yet been systematically examined. Most literature treats these spaces as either urban agriculture infrastructure or as components of green planning, but rarely as landscapes in the normative sense articulated by the ELC.

We found that the framing of urban food environments as *landscapes of co-creation*, subject to both NEB design ethos and ELC governance, remains a conceptually and empirically unexplored. This paper addresses that gap by proposing a 3Ps framework, for People, Places, Policies, grounded in both ELC governance instruments and NEB design principles, and tested through a case in Zagreb, Croatia.

3. Methodology

This research adopts a qualitative, multi-stage methodology designed to address the gaps identified in the literature.

First, a targeted review of the European Landscape Convention's corpus has been conducted, focusing on official Council of Europe documents and select academic literature that interpret, apply, or critique the ELC. The conducted literature review does not follow a formal scoping review protocol (Mak and Thomas 2022). Instead, it employs a *narrative synthesis* to trace insights from different sources, including Council of Europe publications and external climate policy documents, to provide a comprehensive overview of urban climate resilience themes within the Landscape Convention's corpus. Publications were examined for explicit references to landscape, resilience, and climate change, as well as implicit or explicit connections to design, aesthetics, and participation.

Second, a triangulated conceptual framework (Figure 2) that integrates (a) the ELC, (b) the NEB, and (c) the notion of Sustainable Transformation of Urban Food Systems (SusToUFS) has been developed to operationalise landscape governance in climate-responsive urban contexts, which can influence *landscape preferences* and *perceived restrictiveness*. It draws on the Bauhaus Bites (BB) project (European Union 2024), which envisages "Food Environments" as co-created places where community, ecology and design converge. To operationalise this integration, the 3Ps framework, which includes People, Places, and Policies, was formulated. This strategy (Figure 2) operationalises the triangle. The 'People' pillar focuses on inclusive co-creation processes. 'Places' addresses spatial interventions in everyday landscapes, while 'Policies' ensures alignment with governance and scaling. We outline how each 'P' maps to ELC articles and NEB principles (Figure 3).

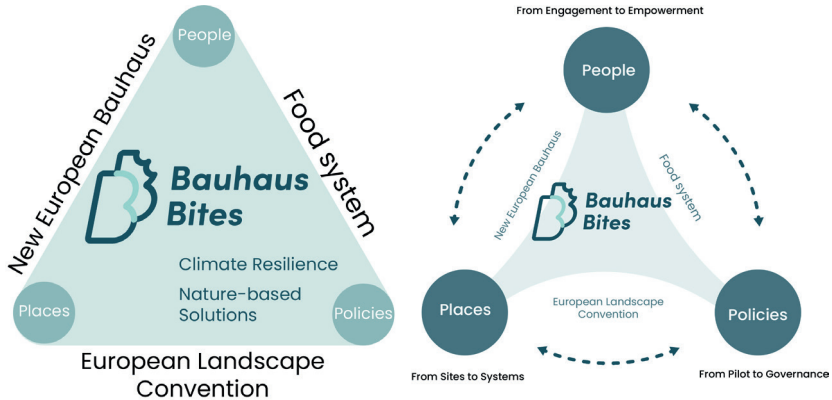


Figure 2 (left). Triangulated conceptual framework that integrates the European Landscape Convention (ELC) and the New European Bauhaus (NEB) through the applied innovation in Sustainable Transformation of Urban Food System (SusToUFS). Source: Authors.

Figure 3 (right). The 3Ps framework: People, Places, Policies as cross-cutting dimensions in the Bauhaus Bites conceptual triangle. Source: Authors based on the BB Vision and Impact Framework.

The study employs a case-study methodology centred on the City of Zagreb and the Sopot neighbourhood, selected for its policy-readiness and prior engagement with nature-based solutions through the proGReg project (proGReg Consortium, 2017). The 3Ps framework is applied to structure the analysis:

- People: Participatory governance, food literacy, inclusive design
- Places: Spatial transformation, green infrastructure, multifunctional landscapes
- Policies: Regulatory integration, strategic planning, policy feedback loops.

This triangulated methodology allowed us to assess not only site-level outcomes but also systemic linkages between governance, design, and multifunctional landscapes.

4. Case Study Area: Zagreb and the Sopot Community Garden

The reference case study examines a bottom-up approach toward enhancing landscape policy in one of the seven cities partnering in the project *Bauhaus Bites: Positive Food Environments Fortified with Nature-Based Solutions and*

New European Bauhaus, funded under the EU’s HORIZON Europe (European Union 2024).

The case study focuses on the City of Zagreb, Croatia, and specifically the development of a therapeutic and community garden in the Sopot neighbourhood, located in the urban-peripheral area of Novi Zagreb. With a well-established municipal strategy on urban gardening¹ and a strong policy focus on greening and public health, as well as prior involvement in the EU-funded project *proGReg*, ‘Productive Green Infrastructure for Post-industrial Urban Regeneration’, funded by the European Commission under *Horizon 2020* (Figure 4), Zagreb has laid the foundation for operationalising landscape as a public and participatory infrastructure.

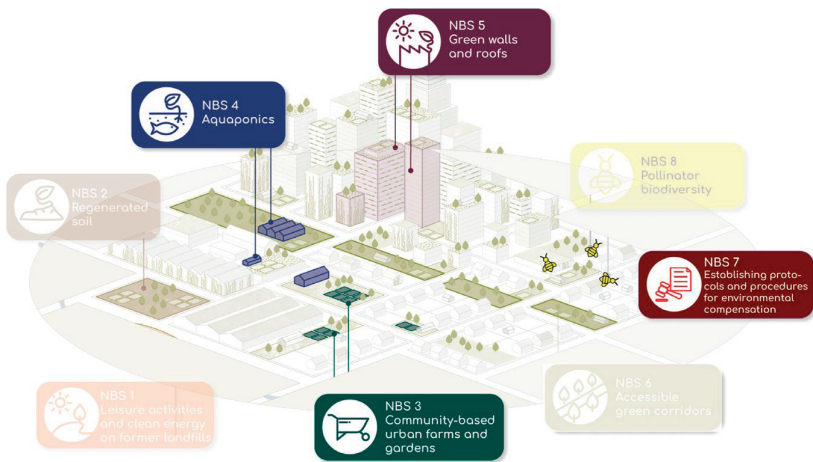


Figure 4. The diagram implemented NBS in the Zagreb Living Lab (RWTH), Croatia, as part of the *proGReg* project. Reproduced with permission from the City of Zagreb, co-authors of this paper.

Building on this trajectory, the BB pilot in Sopot, New Zagreb (Figure 5) brings new relevance to landscape transformation. The pilot site, a previously

¹ The City of Zagreb launched the Urban Gardens project in 2013 to provide citizens with temporary access to small plots for growing food, spices, and flowers. This initiative promotes sustainable land use, improves access to healthy food, supports biodiversity, and builds community. Currently, there are 10 urban gardens in Zagreb, with around 2,000 plots across 20 hectares. Plots are allocated through public calls, prioritising socially disadvantaged citizens. Each garden includes water supply, tool storage, composters, and communal areas for training and activities. The City Office for Agriculture and Forestry manage allocation and maintenance, ensuring support and proper usage.

underutilised section of an existing urban garden, is being transformed into an inclusive and accessible therapeutic food environment. The selection of Zagreb is grounded in its long-standing commitment to landscape as a space for community, care, and food production. Since 2013, the *City's Urban Gardens* programme has provided more than 2,000 citizens with access to publicly managed garden plots across ten locations.



Figure 5 (left). The Sopot Inclusive Garden in Zagreb during the Kick-off Meeting of the Bauhaus Bites Project, Study Visit, November 2024. Source: Bauhaus Bites Project.

Figure 6 (right). The therapeutic garden in Zagreb, Kick-off meeting of Bauhaus Bites project, Study visit, November 2024. (source: from Bauhaus Bites' Vision towards Resilient, Inclusive, Healthy and Green Rural, Coastal and Urban Communities by Slađana Lazarević and Deborah Navarra (ISBN 978-82-694264-0-3), page 40)

These efforts have supported social cohesion, circularity, and food literacy. More recently, the city introduced a therapeutic garden in Sesvete (Figure 6), co-designed with vulnerable groups and healthcare professionals, demonstrating how underused land can be reclaimed for ecological regeneration and healing.

The selected case study provides a fertile testing ground for this investigation due to its layered urban morphology, active engagement in European sustainability agendas, and existing interest in participatory green infrastructure. While Zagreb has a strong tradition of informal food production through allotment gardens and urban agriculture, formal integration of food systems into spatial and health planning remains limited. The Sopot intervention (Figure 5) marks a shift in this landscape governance. The Sopot Inclusive Garden was co-designed with local residents, NGOs, and municipal authorities as a therapeutic, inclusive, and edible landscape. It integrates multifunctional design elements—therapeutic planting, edible gardens, inclusive accessibility, shading structures, and sustainable water

management—anchored in NEB values and ELC principles. Zagreb is an especially suitable case because it already values its landscape (Zagreb won the 2020 European Green Capital Award) and has active NGOs involved in urban greening. Its role as a *BB Trailblazer* means there is institutional and financial support to experiment. Moreover, the referent case forms part of a broader urban food strategy envisioned within *Bauhaus Bites*, which includes other experimental food landscapes across Europe. The Zagreb gardens, however, are distinct in that they exemplify a bottom-up process with strong institutional support from city departments of health, planning, and environment. This makes it an ideal setting to explore multi-level governance, urban transformation, and integrated urban resilience, all core concerns of this research.

5. The 3Ps (People, Places, Policies) Framework

In response to climate challenges, food insecurity, and growing inequalities in European cities, this paper proposes a **triangulated conceptual framework** that integrates the ELC and the NEB through the applied innovation in **Sustainable Transformation of Urban Food System (SusToUFS)**, through three operational dimensions for People, Places, Policies, which is to be further explored and fully developed in the framework of the *Bauhaus Bites (BB)* project (2024-2027).

The framework is grounded in the hypothesis that **climate resilience**, **spatial justice**, and **sustainable transformations** of urban food systems can only be achieved through a design-led, participatory, and culturally rooted transformation of everyday landscapes. At the centre of this framework lies *Bauhaus Bites*, a project that operationalises this intersection through the co-creation of *BB Food Environments*, conceived as multifunctional spaces where community, ecology, and culture converge (Figures 2 and 3).

ELC serves as the legal and ethical foundation. Its expansive and inclusive definition of landscape emphasises *perception*, *participation*, and *democratic planning*, making it particularly suited to address the transformation of foodscapes in the climate era.

NEB contributes a cultural and design dimension, enriching the ELC with **values** (beauty, sustainability, togetherness) and **methods** (co-creation, storytelling, transdisciplinarity).

SusToUFS introduces the **ecological, social, and spatial urgency** for change. Food becomes a driver for rethinking land use, accessibility, identity, and community health, particularly in post-industrial heritage areas.

The following figure (Figure 7) synthesises how each of the 3Ps: **People**, **Places**, and **Policies**, is strategically aligned with relevant provisions of the ELC and the values and principles of the NEB within the BB framework.

	PEOPLE	PLACES	POLICIES
	From Engagement to Empowerment	From Sites to Systems	From Pilot to Governance
BB Strategy	Use co-creation to build ownership, connect generations, and foster cultural food identity.	Redeploy underused spaces (gardens, markets, rooftops) as hubs for food production, education, and biodiversity.	Use food environments to identify regulatory gaps, test inclusive KPIs, and feed into long-term urban strategies.
ELC Connection	Landscape as perceived and co-governed by people (Art. 1a, Art. 5c)	Recognizes value in all landscapes—everyday, degraded, post-industrial—as potential contributors to quality of life.	Article 6c calls for landscape integration into urban planning, agricultural, and environmental law.
NEB Synergy	"Togetherness" as a design and governance value; embedding inclusion and care into spatial interventions.	"Beauty" through participatory aesthetics, ecological function, and cultural legibility.	"Sustainability" operationalised through circular practices, nature-based solutions, and intersectoral governance.

Figure 7. Strategic alignment of the 3Ps with the ELC and NEB within the Bauhaus Bites framework. Source: Authors

6. Results

Adapting NEB Principles to the Research and Case Application

The NEB framework was operationalised through a triangulated People-Places-Policies (3Ps) approach tailored to Zagreb's context. This approach integrates ELC governance with NEB design ethos and SusToUFS principles, creating a pathway for climate-resilient, inclusive, and landscape-centred urban renewal.

As one of the three Trailblazer cities in the Bauhaus Bites project, Zagreb illustrates how values, strategies, and spatial interventions converge through the 3Ps model. Here, urban food landscapes are being reimagined not only as ecological and productive spaces but also as instruments for social inclusion, policy innovation, and landscape governance.

By focusing on vulnerable users such as elderly residents and people with disabilities, the garden functions as both a **demonstrator of inclusive design** and a **prototype for nature-based solutions** in the face of climate and social challenges.

Zagreb's case thus allows for the **testing of the BB triangle**: ELC, NEB, and sustainable transformation of the urban food system, through real-world spatial interventions. It also enables the city to advance policy integration,

linking participatory design to urban planning, health, and environmental goals. As such, it provides a strong foundation for exploring how landscape can serve as a vehicle for systemic change, rooted in both **policy** and **place**.

The City of Zagreb provides a valuable example of how **urban food landscapes** can serve as **policy instruments** to advance the principles of the ELC and the NEB. The intervention aligns with ELC **principles** by addressing public perceptions and promoting inclusive participation. It also embodies NEB **values** by combining ecological restoration with emotional resonance and design quality. The therapeutic garden is not only a functional green space. It is a **landscape of care**, redefining how people engage with their environment, particularly those who are often excluded from spatial decision-making.

Rather than duplicating or replacing existing initiatives, the Bauhaus Bites pilot in Sopot is designed to build on Sesevete's foundation, reinforcing and extending the city's food and landscape transformation agenda. Located in New Zagreb, the Sopot Garden is being reprogrammed into an inclusive and intergenerational food environment, co-designed with residents, municipal departments, and civil society partners. The pilot includes:

- An 'accessible corner' with raised planting beds and shaded seating
- Spaces for storytelling, communal meals, and educational activities
- Signage and design elements that reflect local identity and food cultures.

This transformation aligns directly with the ELC's call for landscape quality objectives and the NEB's commitment to participatory aesthetics and togetherness. It expands the function of the urban garden beyond horticulture, reframing it as a platform for environmental learning, cultural exchange, and policy innovation.

Zagreb's ambition is not only to improve individual sites but to embed these food environments within broader urban planning and policy frameworks, including the General Urban Plan (City of Zagreb 2016, amended 2025), the Strategy for Green Urban Renewal (City of Zagreb 2021) and future zoning instruments. As a policy demonstrator, the Sopot Garden tests how landscape-led approaches can integrate climate adaptation, public health, and social inclusion into the heart of local governance.

Through this dual-site strategy, Zagreb demonstrates how a city can utilise food-centred landscape interventions to connect existing initiatives, new design practices, and systemic urban policy goals. In doing so, the BB pilot provides a scalable and transferable model for activating the ELC through the lens of NEB values, anchored in place, shaped by people, and driven by policy alignment.

The experiences emerging from Zagreb’s Bauhaus Bites pilot illustrate how food-based landscape interventions can serve as replicable, policy-relevant demonstrators that operationalise the ELC through NEB-informed design and governance (Lazarević and Navarra, 2025). The implementation of Bauhaus Bites in Zagreb demonstrates how the **3Ps framework, People, Places, and Policies**, can translate the ELC–NEB–Food system triangle into practical, participatory, and policy-relevant action (Figure 8). These three dimensions ensure that landscape transformation is not only spatial and ecological, but also civic, cultural, and institutional.

People: The project prioritised inclusive participation, ensuring that co-creation processes involved marginalised groups, intergenerational exchange, and food literacy initiatives. Workshops, co-design sessions, and participatory stewardship agreements were central to the process (Lazarević and Navarra, 2025).

Places: The Sopot Garden was designed as a multifunctional, climate-adapted landscape that integrates edible planting, therapeutic sensory areas, accessible pathways, shading structures, and nature-based water management. Design choices emphasised beauty, ecological function, and community ownership (Figure 7).

Policies: The project established feedback loops between community use, municipal maintenance, and strategic planning. Insights from the pilot inform Zagreb’s General Urban Plan and Green Urban Renewal strategies, demonstrating how local initiatives can scale up to systemic policy frameworks (European Commission, 2020; Council of Europe, 2013).

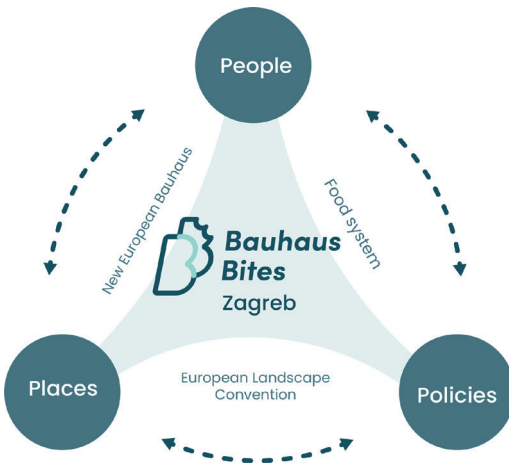


Figure 8. Zagreb’s application of the 3Ps (People, Places, Policies) framework within the Bauhaus Bites Project. Source: Authors

Through the coordinated application of the 3Ps: People, Places, and Policies (Figure 9), Zagreb's BB pilot demonstrates how inclusive food environments can serve as both physical interventions and institutional prototypes. The dual-site strategy links underutilised green space with long-term urban development goals, showing how participatory and design-driven approaches can unlock the civic and systemic potential of landscape.

	PEOPLE	PLACES	POLICIES
	From Engagement to Empowerment	From Sites to Systems	From Pilot to Governance
Zagreb BB Strategy ELC Connection NEB Synergy	Co-designing the Sopot inclusive garden with local residents, including elderly citizens, youth, and people with disabilities. Strengthening community ties and intergenerational engagement through gardening, storytelling, and food-sharing activities. Emphasising perception and participation in alignment with ELC (Art. 5c) and NEB's value of "togetherness".	Transforming an underused section of the existing urban garden in New Zagreb into a therapeutic and educational food environment. Integrating nature-based solutions such as raised beds, shaded seating, and sensory planting. The space embodies "everyday landscape" as valued by the ELC, and NEB's principle of beauty through inclusive design.	Aligning with the City of Zagreb's General Urban Plan, Green Urban Renewal Strategy, and GMO-free status. Testing inclusive KPIs in collaboration with WWF and the University of Copenhagen. The pilot acts as a policy demonstrator to inform long-term landscape and food strategies—localising the ELC and extending NEB ambitions into municipal frameworks.

Figure 9. The Bauhaus Bites Zagreb Triangle: Integrating the European Landscape Convention (ELC), The New European Bauhaus (NEB), Sustainable Transformation of Urban Food System (SusToUFS).

Source: Authors

These practices now provide a wider range of insights that go beyond the city level.

Table 2 presents climate resilience considerations in the reviewed Council of Europe's Landscape Convention publications and highlights specific focus areas related to climate resilience across three topic publications: the *Territory and Landscape Series*, the *European Spatial/Regional Planning Series*, and the *European Spatial Planning and Landscape Series*.

Table 2. Council of Europe Landscape Convention Publications through Climate Resilience and NEB lenses (assessment framework developed by authors, based on BB vision, NEB values and 3Ps Strategy).

Topic Publications	Climate Resilience consideration in Council of Europe Landscape Convention Publications	Focus areas	NEB lens and 3Ps Strategy
Territory and Landscape Series	Council of Europe Landscape Convention: Contribution to human rights, democracy and sustainable development	Sustainable development, climate resilience in urban/regional planning	NEB value – sustainability NEB value – inclusivity PEOPLE PLACES
	Landscape and sustainable development: Challenges of the European Landscape Convention	Sustainable development, climate adaptation	NEB value – sustainability PLACES
European Spatial/ Regional Planning Serie	Natural disasters and sustainable spatial development: prevention of floods (Wroclaw, 30 June 2003)	Flood prevention, urban climate resilience	NEB value – sustainability PEOPLE PLACES
	Sustainable spatial development: strengthening intersectoral relations (Budapest, 26-27 March 2003)	Integrated planning, climate action in cities	NEB value – sustainability NEB value – inclusivity PLACES POLICY
	Spatial planning for the sustainable development of types of European areas: mountains, coastal zones, rural zones, floodplains and alluvial valleys (Sofia, 23-24 October 2002)	Flooding, coastal impacts, climate resilience in cities	NEB Value – sustainability PEOPLE PLACES
	Landscape heritage, spatial planning and sustainable development (Lisbon, 26-27 November 2001) The challenges facing European society with the approach of the year 2000: <i>Strategies for sustainable development in urban regions in Europe</i> (Oslo, Norway, 6-7 September 1994)	Urban planning, sustainable development, climate resilience Urban sustainability, climate action	NEB value – sustainability NEB value – inclusivity PLACES PEOPLE

European Spatial Planning and Landscape Series	22nd Council of Europe Meeting of the Workshops for the implementation of the European Landscape Convention (Seville, Spain, 14-15 March 2019): <i>“Water, landscape and citizenship in the face of global change”</i>	Urban water management, climate change adaptation	NEB value – sustainability NEB value – inclusivity PLACES PEOPLE
	3rd Council of Europe Meeting of the Workshops for the implementation of the European Landscape Convention (Cork, Ireland, 16-17 June 2005): <i>“Landscapes for urban, suburban and peri-urban areas”</i>	Urban landscapes, challenges including climate resilience	NEB value – sustainability NEB value – inclusivity PLACES
	15th Council of Europe Meeting of the Workshops for the implementation of the European Landscape Convention (Urgup, Turkey, 1-2 October 2014): <i>“Sustainable Landscapes and Economy: on the inestimable natural and human value of the landscape”</i>	Urban and rural sustainability, climate-related challenges	NEB value – sustainability NEB value – inclusivity PLACES PEOPLE POLICY

7. Discussion

This paper proposed a triangulated framework linking the ELC, NEB and SusToUFS through a 3Ps strategy (People, Places, Policies) to operationalise landscapes as instruments for climate resilience, spatial justice, and cultural regeneration. The Zagreb case demonstrated how co-designed food environments serve as replicable policy prototypes.

The ELC defines the ‘right to landscape’, while the NEB introduces a design ethos and participatory method for realising that right. The NEB elevates beauty and emotion as essential public values, promoting participatory, artistic, and community-driven transformation (European Commission, 2023; European Commission Joint Research Centre, 2024).

Together, they offer a multi-scalar, democratic framework: ELC provides the institutional scaffolding (law, participation, and integration), while NEB supplies cultural and creative energy (design, storytelling, and placemaking). Co-created, productive, and accessible food environments operationalise this bridge.

Research Impact, Replicability and Strategic Learning

The experiences emerging from Zagreb's Bauhaus Bites pilot illustrate how food-based landscape interventions can serve as replicable, policy-relevant tools to advance the objectives of the European Landscape Convention and the New European Bauhaus.

Several transferable insights emerge from the Zagreb experience:

- **Landscape is not a backdrop, but an infrastructure:** Aligned with the ELC, food environments support ecological transition and adaptive reuse of post-industrial and residual spaces.
- **Food is a system-shaping driver:** Culturally rooted entry point to reimagine everyday landscapes as productive, participatory, and meaningful.
- **Co-creation builds agency and ownership:** Engaging citizens, especially marginalised groups, in design and stewardship strengthens democratic landscape governance and reduces perceived restrictiveness.
- **Policy feedback loops are essential,** drawing insights from local planning frameworks such as the General Urban Plan and the Green Urban Renewal Strategy (European Commission 2020). This supports the ELC's Article 6 mandates for sectoral integration (Council of Europe, 2000; European Commission, 2020).

The 3Ps framework supports replicability by fostering food literacy and spatial belonging (People), selecting adaptable sites as climate anchors (Places), and aligning local initiatives with European agendas while addressing context-specific challenges (Policies). Zagreb demonstrates that landscape, as a transformative interface between ecology, culture, and governance, catalyses resilient, inclusive urban futures (Lazarević and Navarra, 2025).

8. Conclusion and further research

The ELC uniquely mandates protection, management, and planning of *all* landscapes, both ordinary and exceptional, through participatory and democratic principles. This paper argues that integrating ELC with NEB through SusToUFS enables a landscape-centred approach to climate resilience that is aesthetic, inclusive, and actionable.

The Bauhaus Bites (BB) project operationalises this through a triangulated framework and a **3Ps strategy**, weaving spatial, social, and institutional dimensions of transformation and urban regeneration, shaping not just sites but systems. Tested across seven European cities (Birmingham, Fundão, Zagreb, Murska Sobota, Ostend, Palermo, Sarajevo), the BB approach embeds

landscape values into urban governance, participatory planning, and co-creation (Lazarević and Navarra, 2025; European Union, 2024).

Urban food environments, such as community gardens, therapeutic spaces, and inclusive edible landscapes, fulfil the ELC's mandate for landscape quality, public participation, and local identity, yet remain under-recognised in mainstream policy. To advance climate resilience and social inclusion goals, the ELC framework should encompass foodscapes as living, active infrastructures promoting health, biodiversity, and civic agency (Giudice, 2024; Przeźralska et al., 2024). However, this research has limitations. Findings derive from Zagreb, a Trailblazer city with specific governance structures, strong local policies, and EU support, conditions not universally present. The qualitative approach effectively links frameworks with practice but requires complementary comparative and quantitative analysis across BB cities.

Further research should explore how this approach can be tested and adapted in diverse socio-political and geographic contexts, with varying governance capacities, cultural landscapes, and climate vulnerabilities. Additionally, research should examine how the ELC–NEB integration can be incorporated into EU policy instruments, financing mechanisms, and long-term monitoring frameworks (European Commission, 2019, 2023). The comparative studies across all BB cities could be examined to refine the 3Ps framework and identify scalable lessons.

By addressing these questions, the BB model can contribute to enhancing the ELC's application and advancing a broader European agenda for landscape-led urban regeneration.

Acknowledgement

This work has been performed within the project Bauhaus Bites: Positive Food Environments Fortified with Nature-Based Solutions and New European Bauhaus, which has received funding from the European Union's Horizon Europe research and innovation programme under Grant Agreement No. 101182352.

Bibliography

Civitarese Matteucci, Stefano, and Gian Franco Cartei. 2022. The impact of the European Landscape Convention on landscape planning in Spain, Italy and England. *Journal of Environmental Law* 34(2): 307–330. <https://doi.org/10.1093/jel/eqac004>

- City of Zagreb. 2025. Izmjene i dopune Generalnoga urbanističkog plana grada Zagreba Amendments to the General Urban Plan of the City of Zagreb. Zagreb: City of Zagreb, City Office for Strategic Planning and Development. Effective September 20, 2025. <https://zagreb.hr/prijedlog-izmjena-i-dopuna-generalnoga-urbanisticki/187664>.
- City of Zagreb. 2016. Generalni urbanistički plan grada Zagreba (GUP) General Urban Plan of the City of Zagreb. Zagreb: City of Zagreb, City Office for Strategic Planning and Development. <https://zagreb.hr/generalni-urbanisticki-plan-grada-zagreba-gup/89066>.
- City of Zagreb. 2021. Green Infrastructure Strategy of the City of Zagreb. Zagreb: City of Zagreb, City Office for Strategic Planning and Development. Referenced in Greenpeace Croatia. 2021. Urban Green Infrastructure in Zagreb. https://www.greenpeace.org/static/planet4-croatia-stateless/2021/07/15doofe4-zagrebgi_final-engleski.pdf.
- Council of Europe. "European Landscape Convention." Opened for signature October 20, 2000. *European Treaty Series no. 176*. <https://www.coe.int/en/web/landscape/the-european-landscape-convention>.
- Council of Europe. "Integrating Landscape to Other Policies That May Have a Direct or Indirect Impact on It." The European Landscape Convention. Last modified March 15, 2024. Accessed May 1, 2025. <https://www.coe.int/en/web/landscape/integrating-landscape-to-other-policies-that-may-have-a-direct-or-indirect-impact-on-it>.
- Council of Europe. *Urban Landscapes and Climate Change: The Contribution of Landscape Architects to Improve the Quality of Life*. Strasbourg: Council of Europe, 2021. <https://www.iflaeurope.eu/assets/docs/CEP-CDCPP>.
- Council of Europe. Natural Disasters and Sustainable Spatial Development: Prevention of Floods (Wroclaw, 30 June 2003). European Spatial/Regional Planning Series, No. 70. Strasbourg: Council of Europe Publishing, 2003
- Council of Europe. *Sustainable Spatial Development: Strengthening Intersectoral Relations. Proceedings of the International CEMAT Seminar*, Budapest (Hungary), 26-27 March 2003. European Regional Planning, No. 69. Strasbourg: Council of Europe Publishing, 2003. Accessed May 1, 2025. <https://rm.coe.int/168048955b>
- Council of Europe. *Landscape Heritage, Spatial Planning and Sustainable Development: Proceedings of the International CEMAT Seminar*, Lisbon (Portugal), 26-27 November 2001. Strasbourg: Council of Europe Publishing, 2002. Accessed May 1, 2025. <https://ppl-ai-file-upload.s3.amazonaws.com/web/direct-files/attachments/5876658/3b3258cf-0208-4e30-9bc4-89dco2e0ff49/file.pdf>.
- Council of Europe. *Urban Landscapes and Climate Change: The Contribution of Landscape Architects to Improving the Quality of Life*. Report by Michael Oldham et al. CEP-CDCPP (2021) 7E. Strasbourg: Council of Europe, 2021. Accessed

- May 1, 2025. <https://ppl-ai-file-upload.s3.amazonaws.com/web/direct-files/attachments/5876658/984a2949-e1a8-4d03-ae4b-a7cd460c86f3/file.pdf>.
- Council of Europe. *Landscape and Transfrontier Cooperation: Landscape Knows No Border*. Proceedings of the 16th Council of Europe Meeting of the Workshops for the Implementation of the European Landscape Convention, Andorra la Vella, Andorra, 1–2 October 2015. Strasbourg: Council of Europe, 2016. Accessed May 1, 2025. <https://ppl-ai-file-upload.s3.amazonaws.com/web/direct-files/attachments/5876658/ea4c6e95-aof7-4d28-b14d-fgbea48afb26/file.pdf>.
- Coujard, Clémentine, Larissa De Rosso, Anastasiya Yurchyshyna, Alessandra Gandini, Veronica Garcia Cortes, Silvia Urra Uriarte, and Claudia Hunziker Keller. *New European Bauhaus: A Handbook*. NEBULA project. July 2023. Accessed May 1, 2025. <https://built4people.eu/wp-content/uploads/2023/10/New-European-Bauhaus-a-handbook.pdf>.
- Covenant of Mayors for Climate and Energy – Europe Office. *Adapting to Climate Change in European Cities: Towards Smarter, Swifter & More Systemic Action*. Brussels: Covenant of Mayors for Climate and Energy – Europe Office, 2021. Accessed May 1, 2025. <https://www.preventionweb.net/publication/adapting-climate-change-european-cities-towards-smarter-swifter-more-systemic-action>.
- CrAFt A NEB Pocket Guide: *Climate-Positive Cities and Communities (2024)*. Horizon Europe project. January 2024. Accessed May 1, 2025, <https://craft-cities.eu/wp-content/uploads/2024/12/Neb-Pocket-Guide-Digital-Version.pdf>
- Demuzere, Matthias, Jonas Kittner, Alberto Martilli, Gerald Mills, Christian Moede, Iain D. Stewart, Jasper van Vliet, and Benjamin Bechtel. “A Global Map of Local Climate Zones to Support Earth System Modelling and Urban-Scale Environmental Science.” *Earth System Science Data* 14, no. 8 (2022): 3835–3873. <https://doi.org/10.5194/essd-14-3835-2022>.
- European Committee of the Regions. *Opinion of the European Committee of the Regions — Climate Change Adaptation: Towards More Resilient Cities and Regions in Europe (2021/C 300/06)*. Brussels, 19 March 2021. Accessed May 1, 2025. <https://ppl-ai-file-upload.s3.amazonaws.com/web/direct-files/attachments/5876658/5b441344-7b37-4a97-817a-bae861104b27/file.pdf>.
- European Committee of the Regions. “Opinion of the European Committee of the Regions: Forging a Climate-Resilient Europe — the New EU Strategy on Adaptation to Climate Change” (2021/C 440/08). *Official Journal of the European Union* C 440, 29 October 2021, 42–56. Accessed May 1, 2025. <https://eur-lex.europa.eu/legal-content/EN/TXT/HTML/?uri=CELEX%3A52021IR1903>.
- European Commission. *New European Bauhaus Compass*. Brussels: European Commission, January 2023. Accessed May 1, 2025. https://new-european-bauhaus.europa.eu/system/files/2023-01/NEB_Compass_V_4.pdf.

- European Commission Joint Research Centre. 2024. A Practical Guide to the New European Bauhaus Self-Assessment Method and Tool. Edited by K. Gkatzogias, E. Romano, and P. Negro. Luxembourg: Publications Office of the European Union. <https://publications.jrc.ec.europa.eu/repository/handle/JRC139118>.
- European Commission. Green Urban Renewal Strategies: Guidelines for Drawing Up Green Urban Renewal Strategies. Ministry of Physical Planning, Construction and State Assets of the Republic of Croatia. Accessed June 1, 2025. https://commission.europa.eu/projects/green-urban-renewal-strategies_en.
- European Commission. 2019. The European Green Deal. Communication from the Commission to the European Parliament, the European Council, the Council, the European Economic and Social Committee and the Committee of the Regions. COM(2019) 640 final, December 11, 2019. <https://eur-lex.europa.eu/legal-content/EN/TXT/?uri=celex:52019DC0640>.
- European Union. *Bauhaus Bites: Positive Food Environments Fortified with Nature-Based Solutions and New European Bauhaus*. 2024. <https://doi.org/10.3030/101182352>.
- European Union. 2025. "New European Bauhaus." Last modified May 30, 2025. Accessed May 31, 2025. https://new-european-bauhaus.europa.eu/index_en.
- Giudice, Benedetta. 2024. Planning for landscape and heritage: A community perspective to overcome risks and vulnerabilities in the Italian case study. *International Journal of Disaster Risk Reduction* 110: 104610. <https://doi.org/10.1016/j.ijdr.2024.104610>
- Intergovernmental Panel on Climate Change (IPCC). *Climate Change 2023: Synthesis Report: Contribution of Working Groups I, II and III to the Sixth Assessment Report of the Intergovernmental Panel on Climate Change*. Edited by H. Lee and J. Romero. Geneva: IPCC, 2023. <https://doi.org/10.59327/IPCC/AR6-9789291691647>.
- Intergovernmental Panel on Climate Change (IPCC). "IPCC Agrees on Outlines of Three Key Contributions to AR7." March 1, 2025. Accessed May 1, 2025. <https://www.ipcc.ch/2025/03/01/ipcc-agrees-outlines-of-three-key-contributions-to-ar7/>.
- Lazarević, Slađana, and Alenka Temeljotov Salaj. "Urban Realities for Implementation of New European Bauhaus (NEB) Values and Principles: Case Study Nyhavna, Trondheim." In *Digital Dreams, Urban Realities: Crafting Sustainable, Inclusive, and Beautiful Cities*, edited by Milena Vukmirović, Aleksandra Đukić, Eva Vaništa Lazarević, and Aleksandra Krstić-Furundžić, chap. 11. Cham: Springer Nature Switzerland, 2025. Pages 189-209, ISBN 978-3-031-76352-6, <https://link.springer.com/book/9783031763526>
- Lazarević, Slađana, and Deborah Navarra. *Bauhaus Bites Vision towards Resilient, Inclusive, Healthy and Green Rural, Coastal and Urban Communities*. Academic monograph. NTNU Open, 2025. Zenodo. <https://doi.org/10.5281/zenodo.18213693>
- Mak, Susanne, and Aliko Thomas. 2022. "Steps for Conducting a Scoping Review." *Journal of Graduate Medical Education* 14, no. 5 (October): 565-567. <https://doi.org/10.4300/JGME-D-22-00621.1>.

- proGReg Consortium. 2017. proGReg Project: Nature-Based Solutions for Urban Regeneration with and for Citizens (2017–2020). Horizon 2020 project. Accessed May 1, 2025. <https://progireg.eu/>.
- Przeźralska, Kornelia, Katarzyna Wartalska, Weronika Rosińska, Jakub Jurasz, and Bartosz Kaźmierczak. 2024. “Climate Resilient Cities: A Review of Blue-Green Solutions Worldwide.” *Water Resources Management* 38 (15): 5885–5910. doi:10.1007/s11269-024-03950-5.
- The Shift News. “Malta Ratifies Landscape Convention After 25-Year Delay, as It Holds Council of Europe Presidency.” May 29, 2025. Accessed May 31, 2025. <https://theshiftnews.com/2025/05/29/malta-ratifies-landscape-convention-after-25-year-delay-as-it-holds-council-of-europe-presidency/>.
- UNESCO. Recommendation on the Historic Urban Landscape. Paris: UNESCO, 2011. <https://whc.unesco.org/uploads/activities/documents/activity-638-98.pdf>.
- UNESCO. Urban Heritage for Resilience: Consolidated Results of the Implementation of the 2011 Recommendation on the Historic Urban Landscape, 3rd Member States Consultation. 2023. https://unesco.org.uk/site/assets/files/2918/urban_heritage_for_resilience_-_consolidated_results_of_the_implementation_of_the_2011_recommendation_on_the_historic_urban.pdf.
- UN-Habitat. *World Cities Report 2024: Cities and Climate Action*. Nairobi: UN-Habitat, 2024. <https://unhabitat.org/wcr>.
- UN-Habitat. “Cities and Climate Action.” In *World Cities Report 2024*. 2024. Accessed February 2025. https://unhabitat.org/sites/default/files/2024/11/wcr_2024_-_chapter_1.pdf